



NIRMALA COLLEGE OF PHARMACY

(A UNIT OF CATECHIST SISTERS OF ST. ANN'S, HYD)

ATMAKURU (Village), Mangalagiri (M), Guntur Dist-522503, A.P, India.

Approved by AICTE & PCI New Delhi & Govt. of A.P, Affiliated to SBTET & A.N University, Guntur

Accredited by NAAC & Approved under UGC 2f & 12b and Approved Institutional Innovation Council by AICTE

Ph: 08645-236255, 236722, 9912342142 E-mail: nepa_csagp@yahoo.co.in Web site: www.ncpacsag.ac.in

7.1.2 The Institution has facilities and initiatives for

- A. Alternate sources of energy and energy conservation measures
- B. Management of the various types of degradable and non degradable waste
- C. Water conservation
- D. Green campus initiatives
- E. Disabled-friendly, barrier free environment

E. Barrier-Free & Disabled Friendly Environment

The main aim of the “Persons with Disabilities (Equal Opportunities, Protection of Rights and Full Participation) Act, 1996, enacted by the Government of India on January 1, 1996 is to create a barrier-free environment for persons with disabilities and to make special provisions for the integration of persons with disabilities. The institution ensures within their economic capacity provision for installation of facilities for the benefit of persons with visual handicaps, slopes to be made in pavement for the easy access of wheelchair users, devising appropriate symbols of disability and warning signals at appropriate places. In regard to non-discrimination in the built environment, provisions have been made for ramps in Academic buildings, the adaptation of toilets for wheelchair users, Braille symbols and proper signage.

Geo tagged Photos are attached/given in the following pages with Captions



S. R. Sankar
PRINCIPAL
NIRMALA COLLEGE OF PHARMACY
ATMAKUR VILLAGE,
MANGALAGIRI, GUNTUR Dt., A.P



NIRMALA COLLEGE OF PHARMACY

(A UNIT OF CATECHIST SISTERS OF ST. ANN'S, HYD)

ATMAKURU (Village), Mangalagiri (M), Guntur Dist-522503, A.P, India.

Approved by AICTE & PCI New Delhi & Govt. of A.P, Affiliated to SBTET & A.N University, Guntur

Accredited by NAAC & Approved under UGC 2f & 12b and Approved Institutional Innovation Council by AICTE

Ph: 08645-236255, 236722, 9912342142 E-mail: nepa_csag@yahoo.co.in Web site: www.nepacsag.ac.in

Elevator Buttons for Disabled Blind People with Braille Language Signs on Panel



S. R. Sankar
PRINCIPAL
NIRMALA COLLEGE OF PHARMACY
ATMAKUR VILLAGE,
MANGALAGIRI, GUNTUR Dt., A.P



NIRMALA COLLEGE OF PHARMACY

(A UNIT OF CATECHIST SISTERS OF ST. ANN'S, HYD)

ATMAKURU (Village), Mangalagiri (M), Guntur Dist-522503, A.P, India.

Approved by AICTE & PCI New Delhi & Govt. of A.P, Affiliated to SBTET& A.N University, Guntur

Accredited by NAAC & Approved under UGC 2f & 12b and Approved Institutional Innovation Council by AICTE

Ph: 08645-236255, 236722, 9912342142 E-mail: nepa_csagp@yahoo.co.in Web site: www.nepacsag.ac.in

Lift Facility to Persons with Disabilities



SARASWATI
PRINCIPAL
NIRMALA COLLEGE OF PHARMACY
ATMAKUR VILLAGE,
MANGALAGIRI, GUNTUR DI., A.P



NIRMALA COLLEGE OF PHARMACY

(A UNIT OF CATECHIST SISTERS OF ST. ANN'S, HYD)

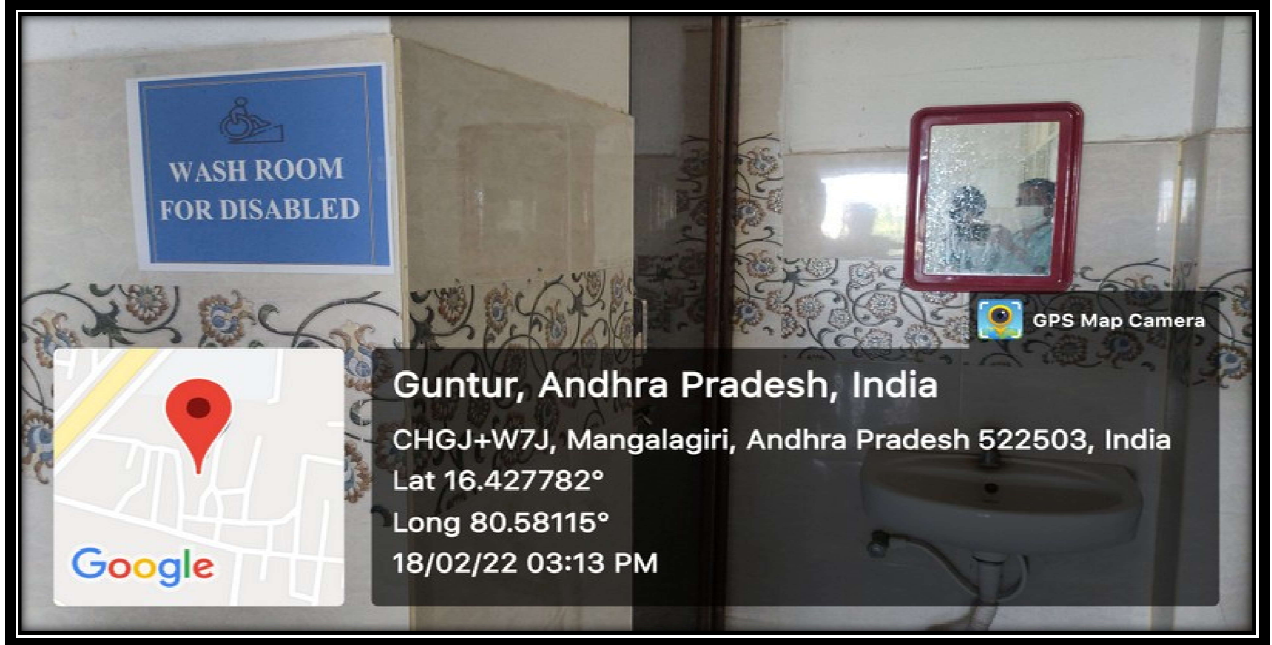
ATMAKURU (Village), Mangalagiri (M), Guntur Dist-522503, A.P, India.

Approved by AICTE & PCI New Delhi & Govt. of A.P, Affiliated to SBTET & A.N University, Guntur

Accredited by NAAC & Approved under UGC 2f & 12b and Approved Institutional Innovation Council by AICTE

Ph: 08645-236255, 236722, 9912342142 E-mail: ncpa_csagp@yahoo.co.in Web site: www.ncpacsag.ac.in

Separate Washroom Facility to Persons with Disabilities



Ramp Facility to Persons with Disabilities



SARASWATI
PRINCIPAL
NIRMALA COLLEGE OF PHARMACY
ATMAKUR VILLAGE,
MANGALAGIRI, GUNTUR DI., A.P



NIRMALA COLLEGE OF PHARMACY

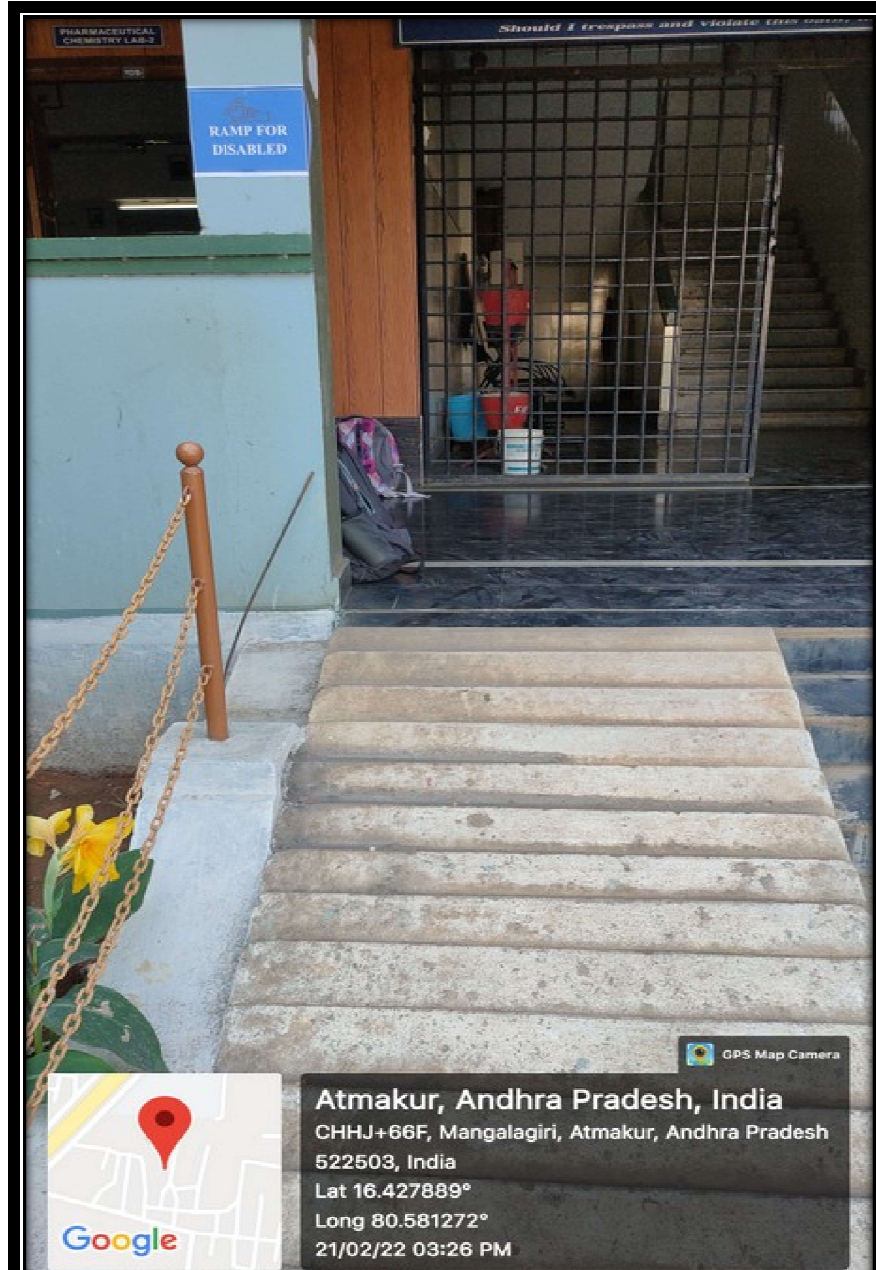
(A UNIT OF CATECHIST SISTERS OF ST.ANN'S, HYD)

ATMAKURU (Village), Mangalagiri (M), Guntur Dist-522503, A.P, India.

Approved by AICTE & PCI New Delhi & Govt. of A.P, Affiliated to SBTET& A.N University, Guntur

Accredited by NAAC & Approved under UGC 2f & 12b and Approved Institutional Innovation Council by AICTE

Ph: 08645-236255, 236722, 9912342142 E-mail: ncpa_csagp@yahoo.co.in Web site: www.ncpacsag.ac.in



SARASWATI
PRINCIPAL
NIRMALA COLLEGE OF PHARMACY
ATMAKUR VILLAGE,
MANGALAGIRI, GUNTUR DI., A.P



NIRMALA COLLEGE OF PHARMACY

(A UNIT OF CATECHIST SISTERS OF ST. ANN'S, HYD)

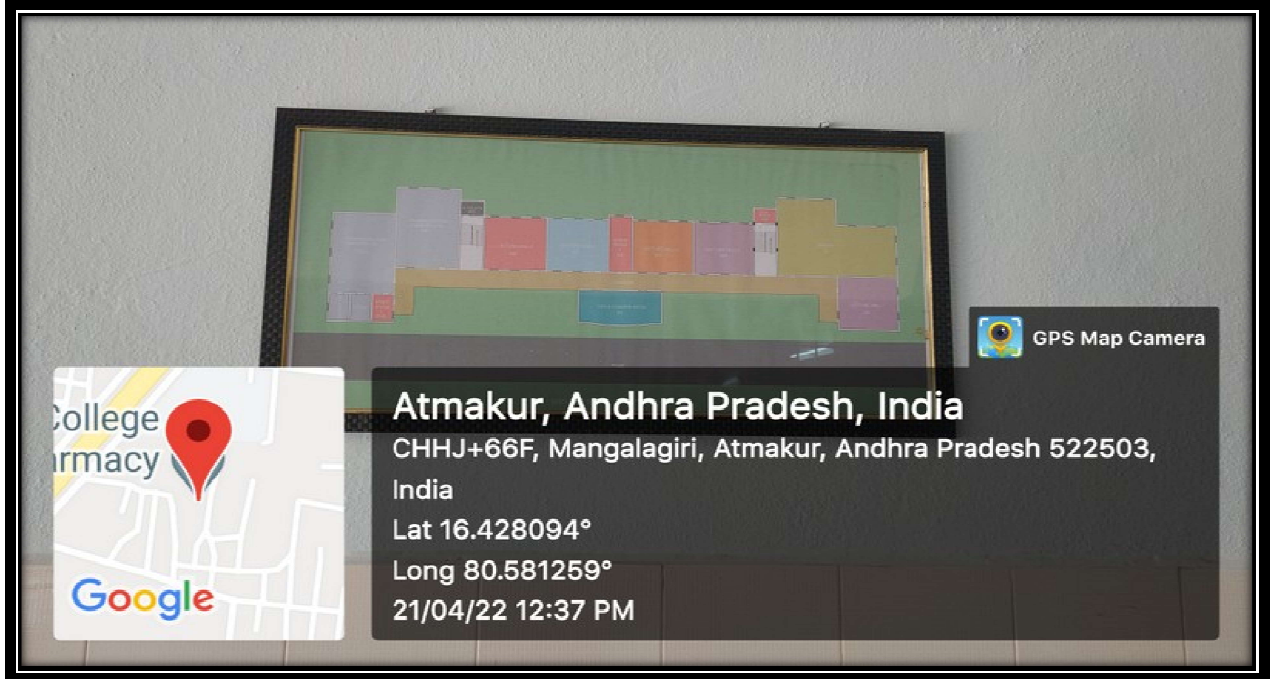
ATMAKURU (Village), Mangalagiri (M), Guntur Dist-522503, A.P, India.

Approved by AICTE & PCI New Delhi & Govt. of A.P, Affiliated to SBTET& A.N University, Guntur

Accredited by NAAC & Approved under UGC 2f & 12b and Approved Institutional Innovation Council by AICTE

Ph: 08645-236255, 236722, 9912342142 E-mail: ncpa_csagp@yahoo.co.in Web site: www.ncpacsag.ac.in

Useful sign boards for Persons with Disabilities



S.A. Ramesh
PRINCIPAL
NIRMALA COLLEGE OF PHARMACY
ATMAKUR VILLAGE,
MANGALAGIRI, GUNTUR Dt., A.P



NIRMALA COLLEGE OF PHARMACY

(A UNIT OF CATECHIST SISTERS OF ST. ANN'S, HYD)

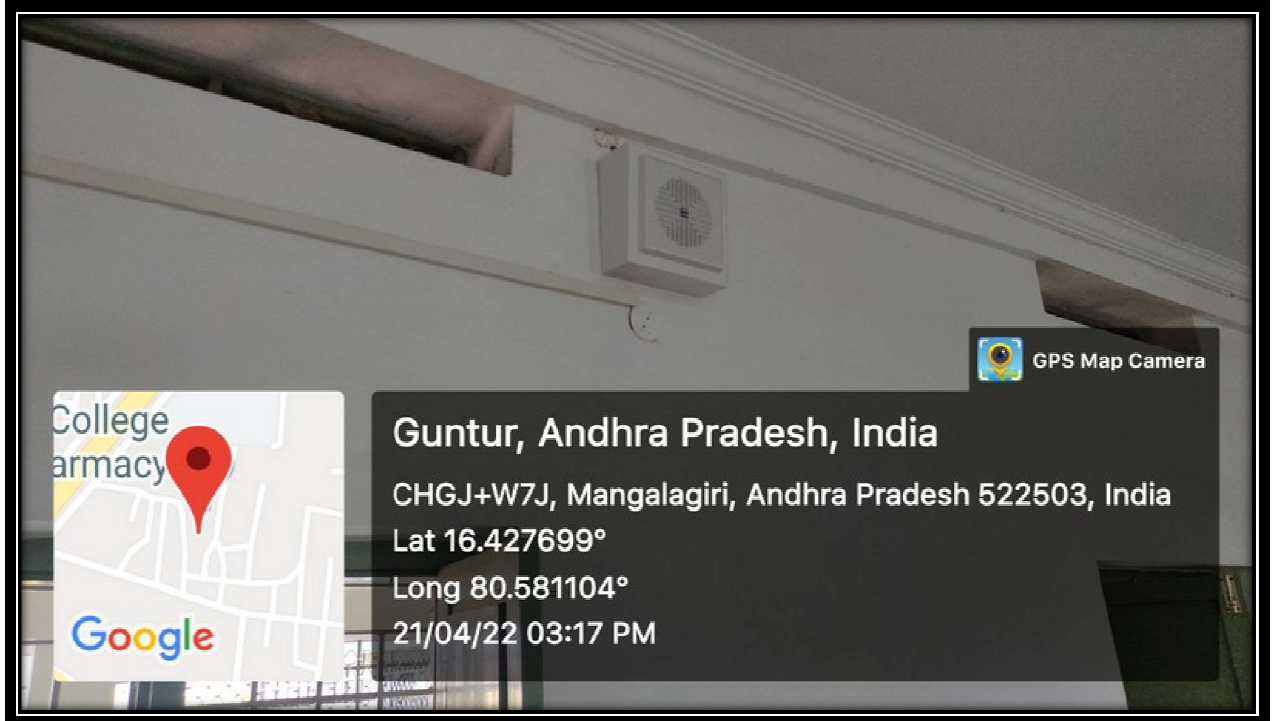
ATMAKURU (Village), Mangalagiri (M), Guntur Dist-522503, A.P, India.

Approved by AICTE & PCI New Delhi & Govt. of A.P, Affiliated to SBTET & A.N University, Guntur

Accredited by NAAC & Approved under UGC 2f & 12b and Approved Institutional Innovation Council by AICTE

Ph: 08645-236255, 236722, 9912342142 E-mail: nepa_csagp@yahoo.co.in Web site: www.nepacsag.ac.in

Useful Audio enhancers / loud speakers for Persons with Disabilities



SARASWATI
PRINCIPAL
NIRMALA COLLEGE OF PHARMACY
ATMAKUR VILLAGE,
MANGALAGIRI, GUNTUR DI., A.P



NIRMALA COLLEGE OF PHARMACY

(A UNIT OF CATECHIST SISTERS OF ST. ANN'S, HYD)

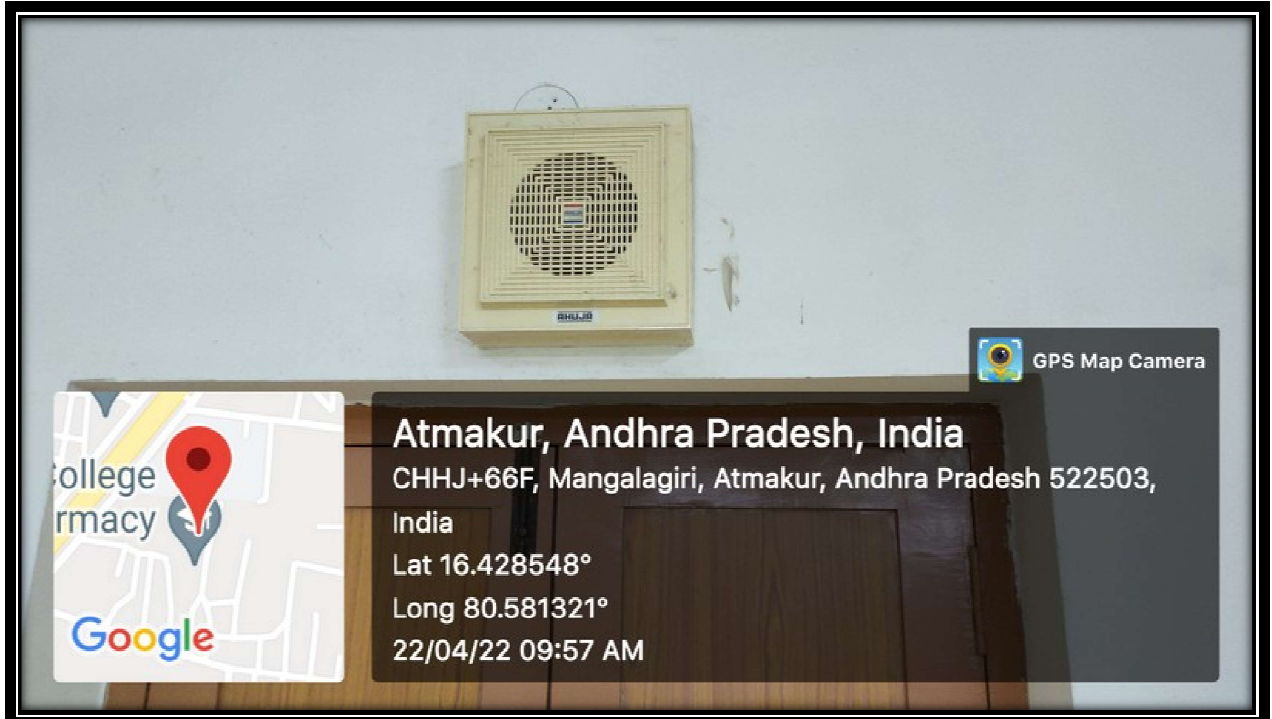
ATMAKURU (Village), Mangalagiri (M), Guntur Dist-522503, A.P, India.

Approved by AICTE & PCI New Delhi & Govt. of A.P, Affiliated to SBTET& A.N University, Guntur

Accredited by NAAC & Approved under UGC 2f & 12b and Approved Institutional Innovation Council by AICTE

Ph: 08645-236255, 236722, 9912342142 E-mail: nepa_csagp@yahoo.co.in Web site: www.nepacsag.ac.in

Useful Audio enhancers / loud speakers for Persons with Disabilities



SARASWATI
PRINCIPAL
NIRMALA COLLEGE OF PHARMACY
ATMAKUR VILLAGE,
MANGALAGIRI, GUNTUR DI., A.P



NIRMALA COLLEGE OF PHARMACY

(A UNIT OF CATECHIST SISTERS OF ST.ANN'S, HYD)

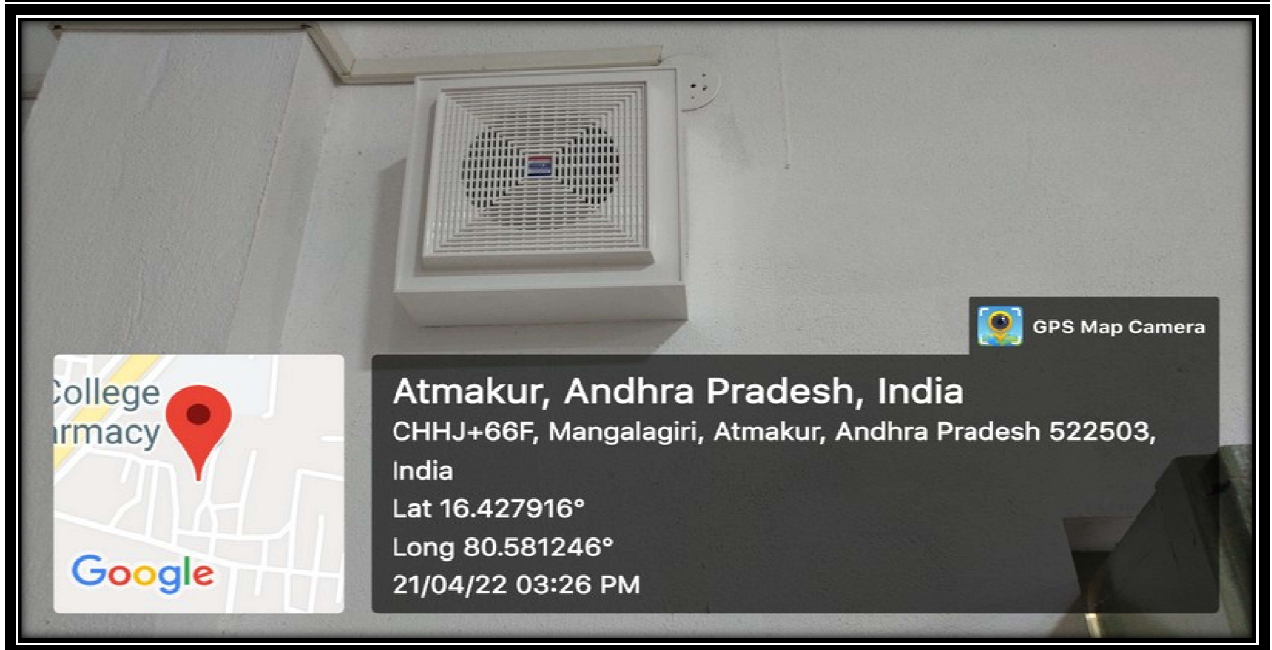
ATMAKURU (Village), Mangalagiri (M), Guntur Dist-522503, A.P, India.

Approved by AICTE & PCI New Delhi & Govt. of A.P, Affiliated to SBTET& A.N University, Guntur

Accredited by NAAC & Approved under UGC 2f & 12b and Approved Institutional Innovation Council by AICTE

Ph: 08645-236255, 236722, 9912342142 E-mail: nepa_csagp@yahoo.co.in Web site: www.nepacsag.ac.in

Useful Audio enhancers / loud speakers for Persons with Disabilities



SARASWATI
PRINCIPAL
NIRMALA COLLEGE OF PHARMACY
ATMAKUR VILLAGE,
MANGALAGIRI, GUNTUR Dt., A.P



NIRMALA COLLEGE OF PHARMACY

(A UNIT OF CATECHIST SISTERS OF ST. ANN'S, HYD)

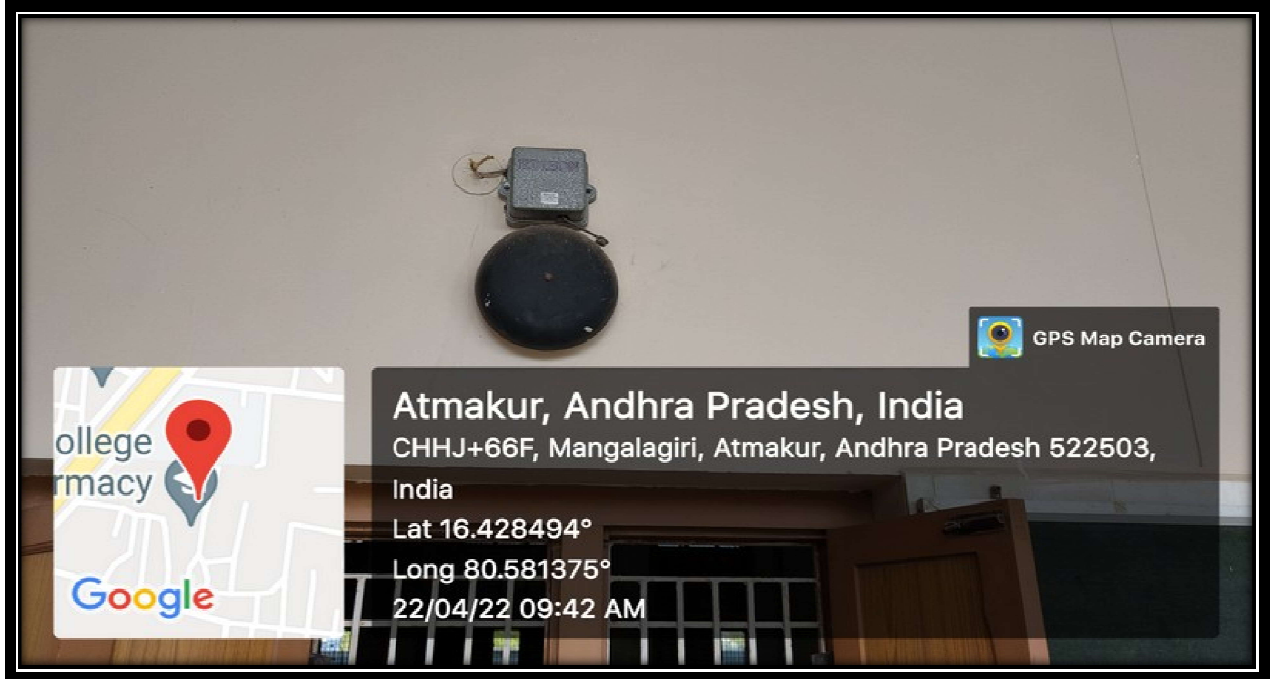
ATMAKURU (Village), Mangalagiri (M), Guntur Dist-522503, A.P, India.

Approved by AICTE & PCI New Delhi & Govt. of A.P, Affiliated to SBTET & A.N University, Guntur

Accredited by NAAC & Approved under UGC 2f & 12b and Approved Institutional Innovation Council by AICTE

Ph: 08645-236255, 236722, 9912342142 E-mail: ncpa_csagp@yahoo.co.in Web site: www.ncpacsag.ac.in

Useful Audio enhancers / loud speakers for Persons with Disabilities



SARASWATI
PRINCIPAL
NIRMALA COLLEGE OF PHARMACY
ATMAKUR VILLAGE,
MANGALAGIRI, GUNTUR Dt., A.P



NIRMALA COLLEGE OF PHARMACY

(A UNIT OF CATECHIST SISTERS OF ST. ANN'S, HYD)

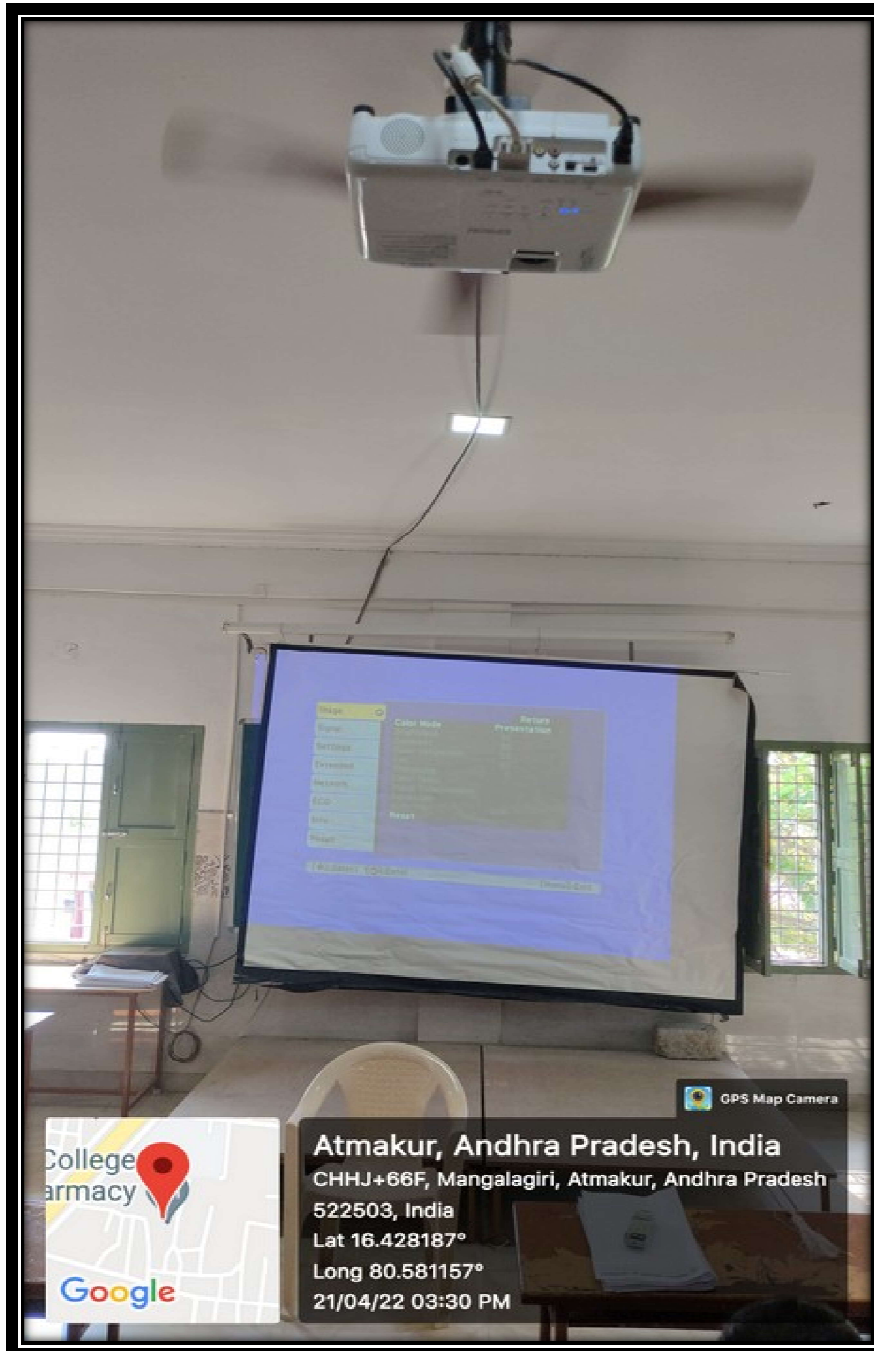
ATMAKURU (Village), Mangalagiri (M), Guntur Dist-522503, A.P, India.

Approved by AICTE & PCI New Delhi & Govt. of A.P, Affiliated to SBTET& A.N University, Guntur

Accredited by NAAC & Approved under UGC 2f & 12b and Approved Institutional Innovation Council by AICTE

Ph: 08645-236255, 236722, 9912342142 E-mail: ncpa_csagp@yahoo.co.in Web site: www.ncpacsag.ac.in

Useful Visual enhancers for Persons with Disabilities



S. R. Sankar
PRINCIPAL
NIRMALA COLLEGE OF PHARMACY
ATMAKUR VILLAGE,
MANGALAGIRI, GUNTUR DI., A.P



NIRMALA COLLEGE OF PHARMACY

(A UNIT OF CATECHIST SISTERS OF ST. ANN'S, HYD)

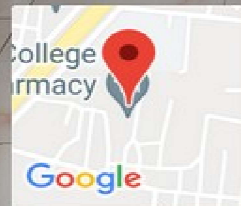
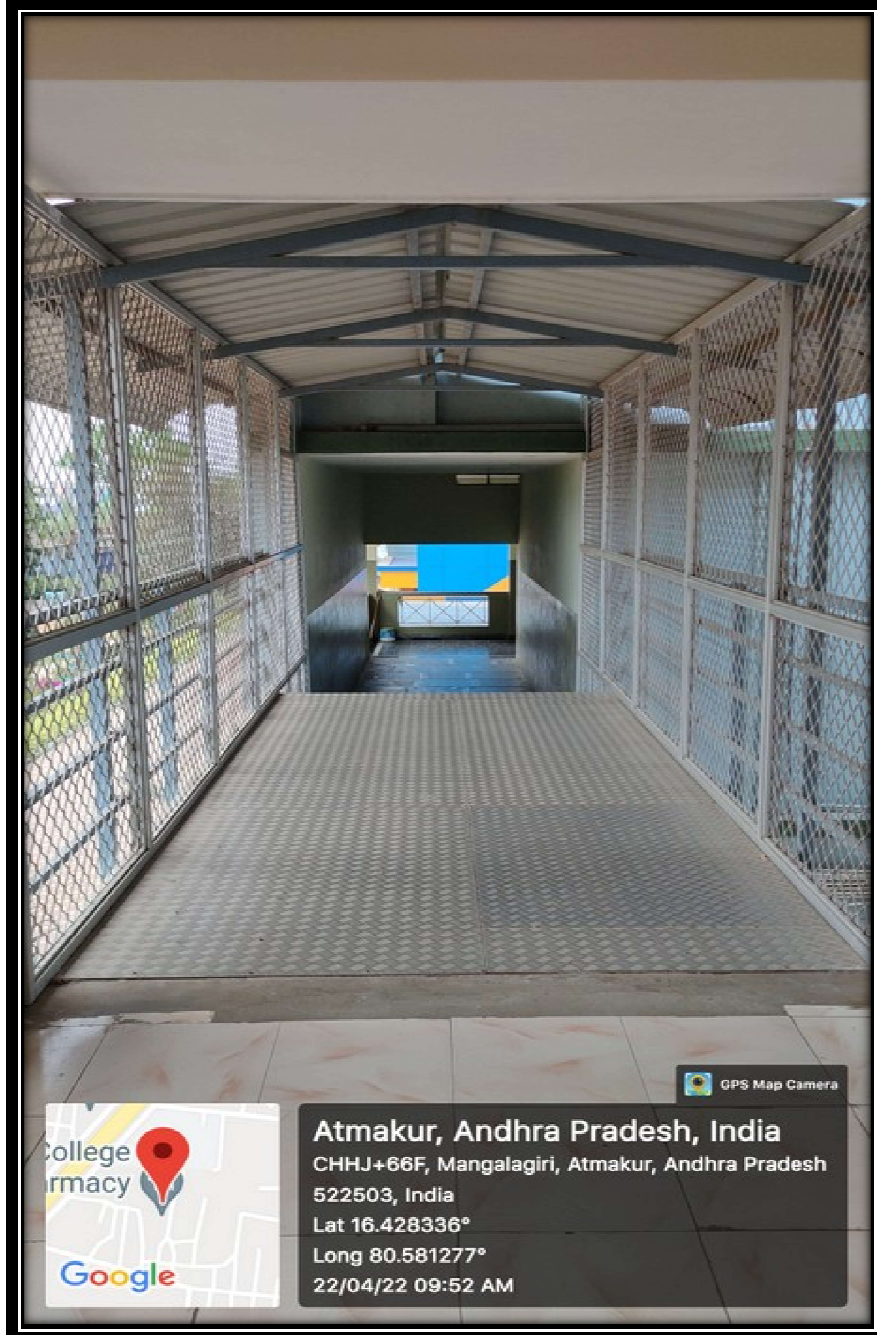
ATMAKURU (Village), Mangalagiri (M), Guntur Dist-522503, A.P, India.

Approved by AICTE & PCI New Delhi & Govt. of A.P, Affiliated to SBTET & A.N University, Guntur

Accredited by NAAC & Approved under UGC 2f & 12b and Approved Institutional Innovation Council by AICTE

Ph: 08645-236255, 236722, 9912342142 E-mail: nepa_csagp@yahoo.co.in Web site: www.nepacsag.ac.in

Nirmala building block to Pasquali building block connection facility



Atmakur, Andhra Pradesh, India
CHHJ+66F, Mangalagiri, Atmakur, Andhra Pradesh
522503, India
Lat 16.428336°
Long 80.581277°
22/04/22 09:52 AM



S. R. Sankar
PRINCIPAL
NIRMALA COLLEGE OF PHARMACY
ATMAKUR VILLAGE,
MANGALAGIRI, GUNTUR DI., A.P